

Diabetes and Optometry



Dr. Daniel Laughlin



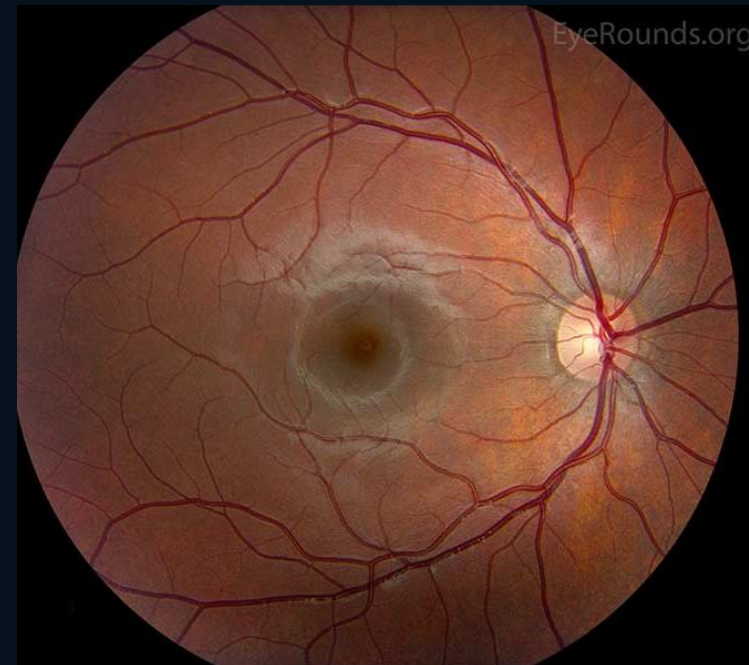
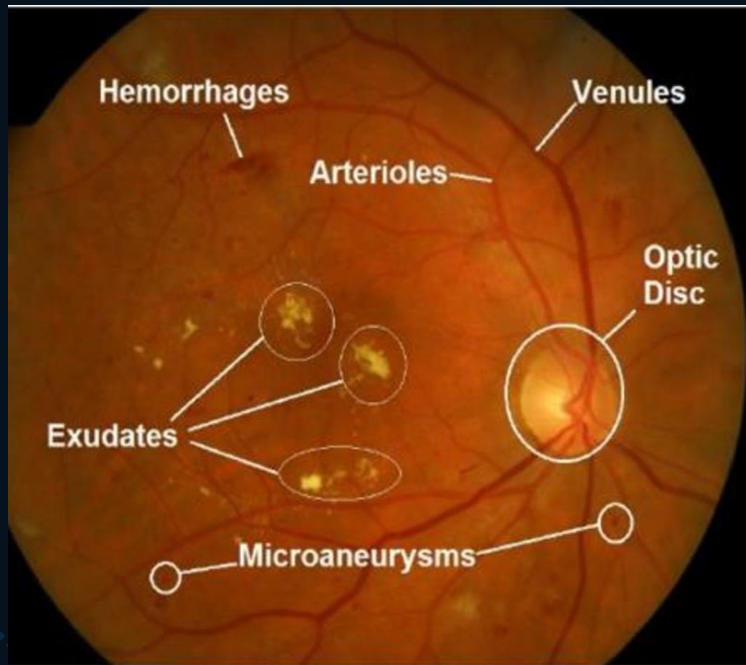
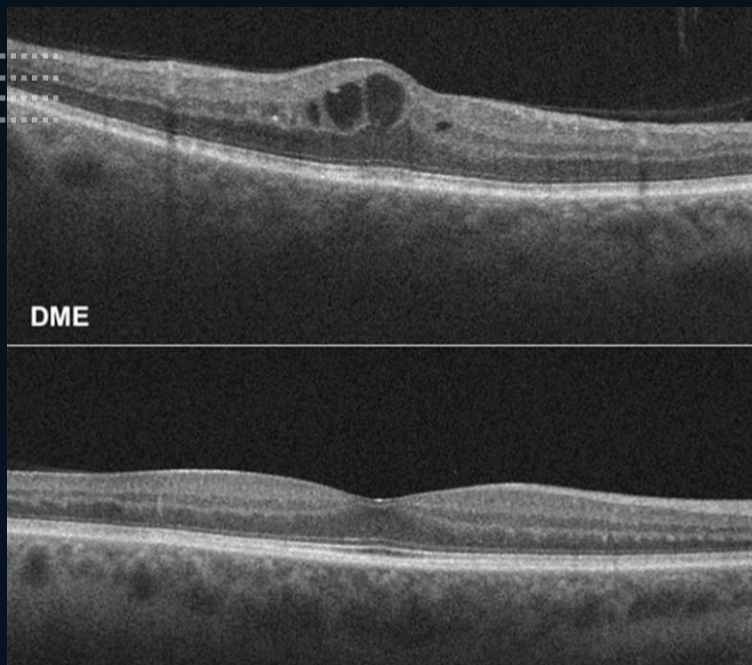
Introduction

- Practice in both British Columbia and the Republic of Ireland
- Partnership with Specsavers Uptown and Mayfair Mall
- Primary interests in Eye Care (Early prevention and modern screening technology)

Optometry and Diabetes

- Diabetes is the leading cause of vision loss between the ages of 18 and 64
- Screening methods are fast and painless (Don't always need dilating eye drops every single time!)
- OCT and Fundus Photography are the primary tools used in my day-to-day practice



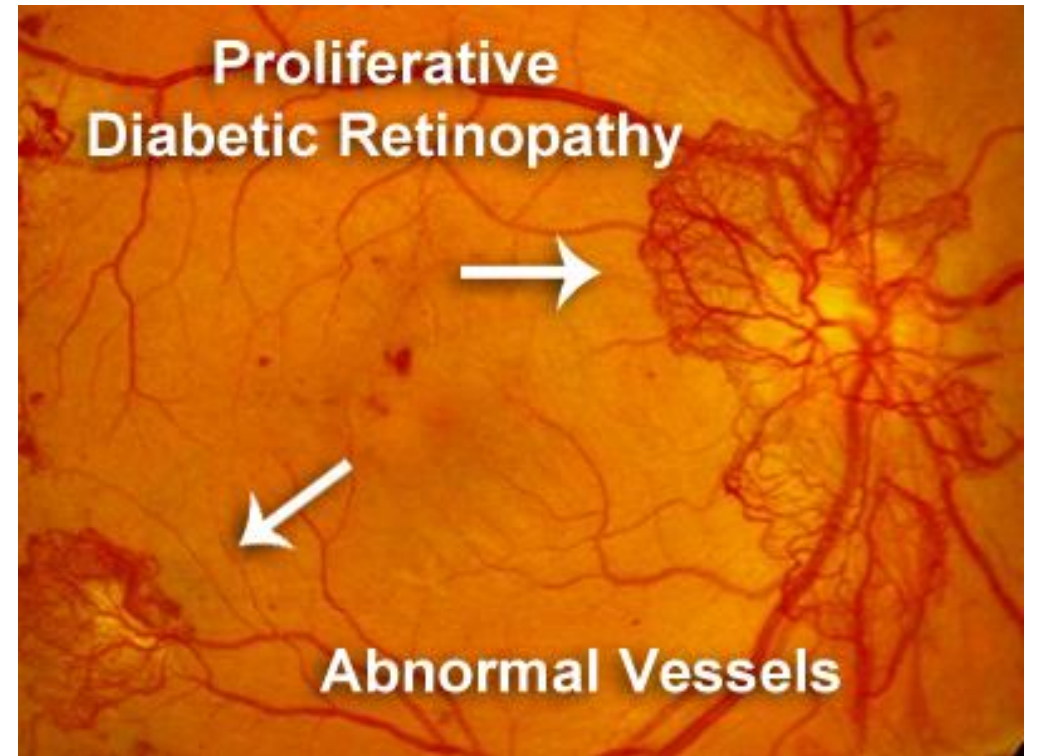


Complications

- Diabetic Retinopathy (Including abnormal blood vessels, macular edema, tissue atrophy)
- Increased Eye Pressure (Glaucoma)

Actionable Changes

- Routine eye examinations (Either every 6 months or annually depending on the individual)
- Constant communication with Primary Care
- Referral to Ophthalmology (Should treatment be indicated)



Eye Exam Coverage

- Eye exams are covered every 6 months by MSP
- This includes updated refraction (glasses check), OCT, Comprehensive eye health assessment
- Communication with other health care providers

